

# GPX-USRIMG Converter

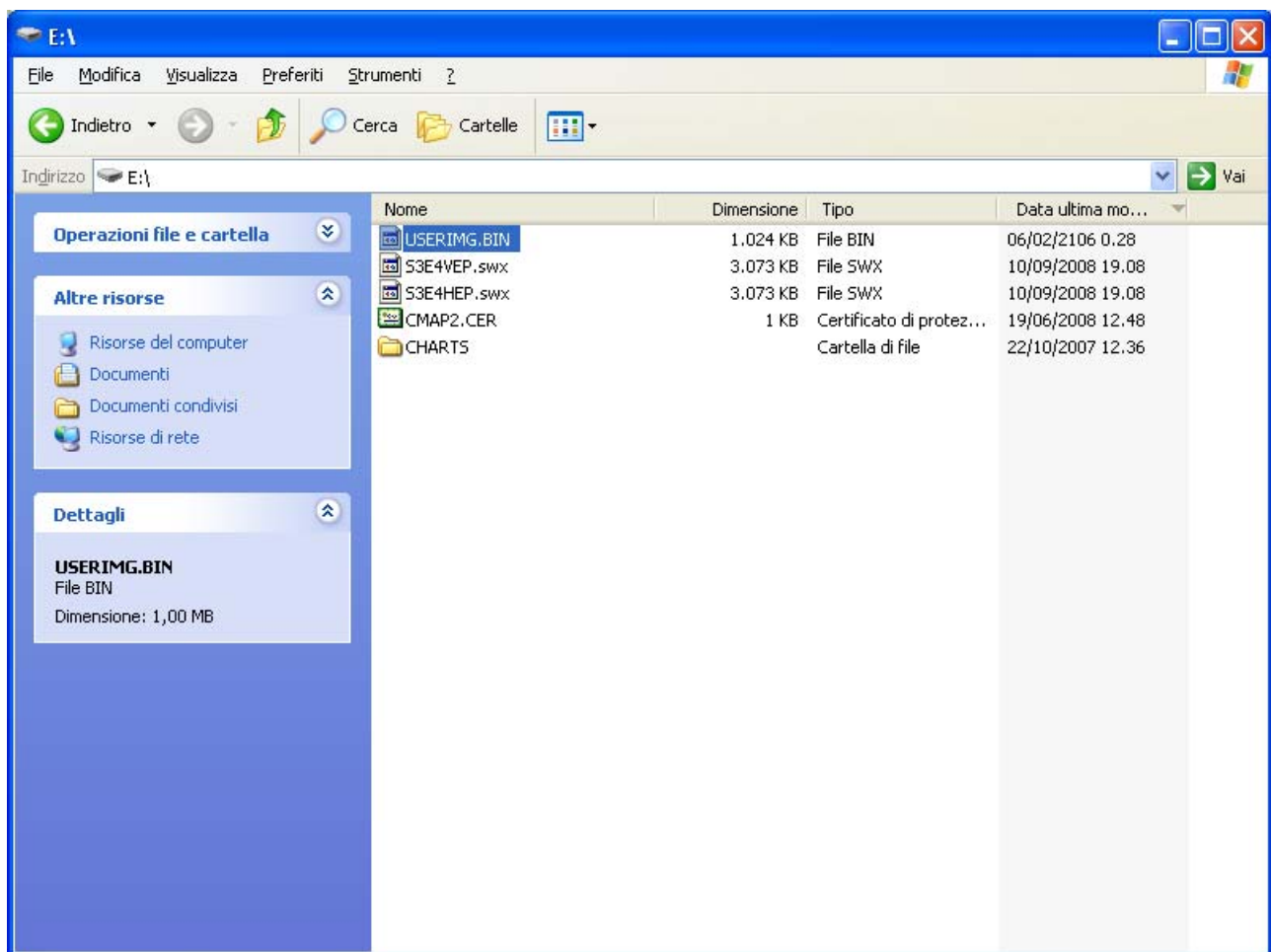
## INTRODUCTION

The GPX-USRIMG Converter is a software made specifically for AvMap customers that converts the data stored in the CF/SD with through the use of the File Manager function of the navigator to the GPX format and viceversa in order to allow compatibility between our products and programs like Google Earth and Map Source.

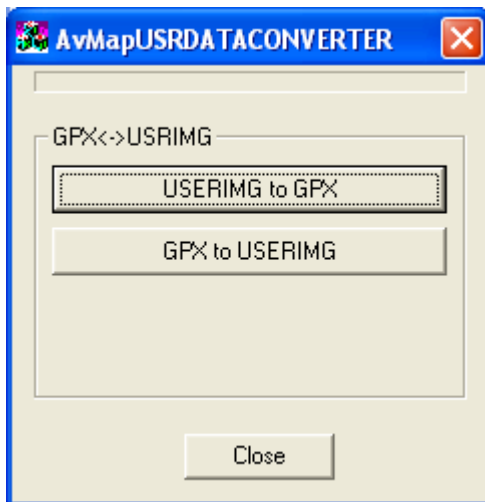
## INSTRUCTIONS

### 1) FROM USRIMG to GPX

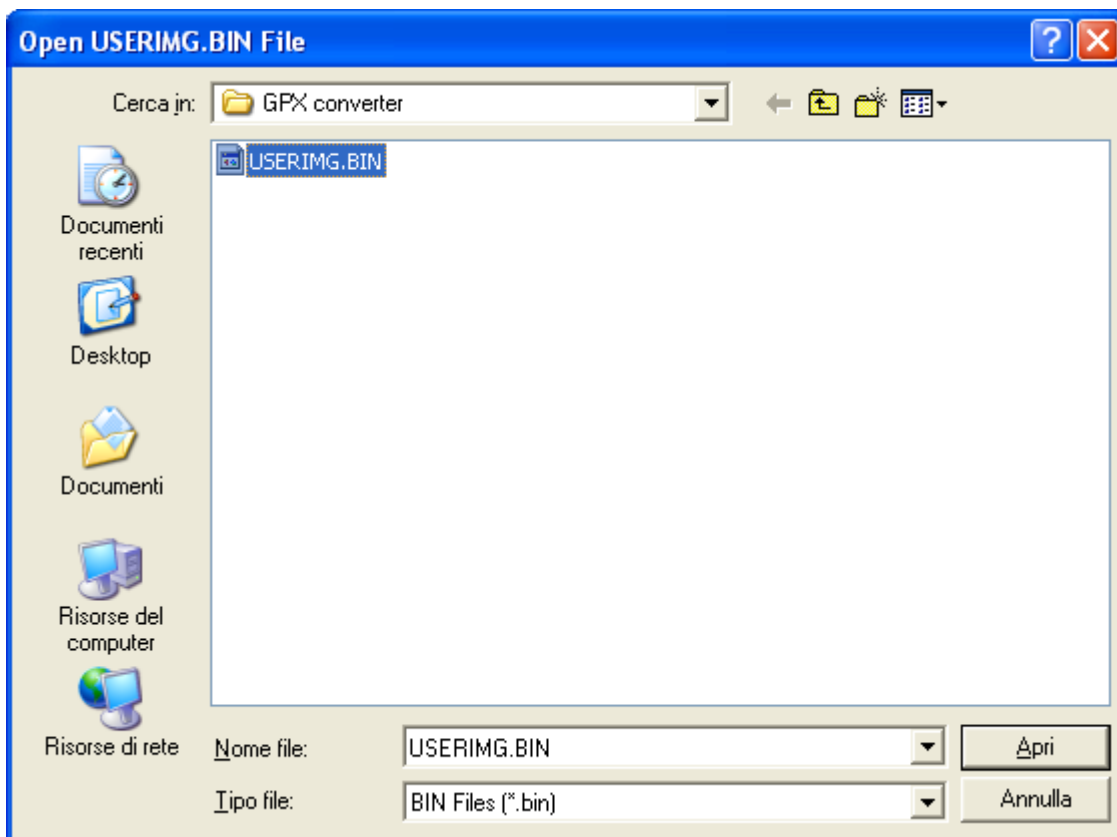
Take from the cartographic CF/SD the USRIMG.BIN file and copy it in your PC.



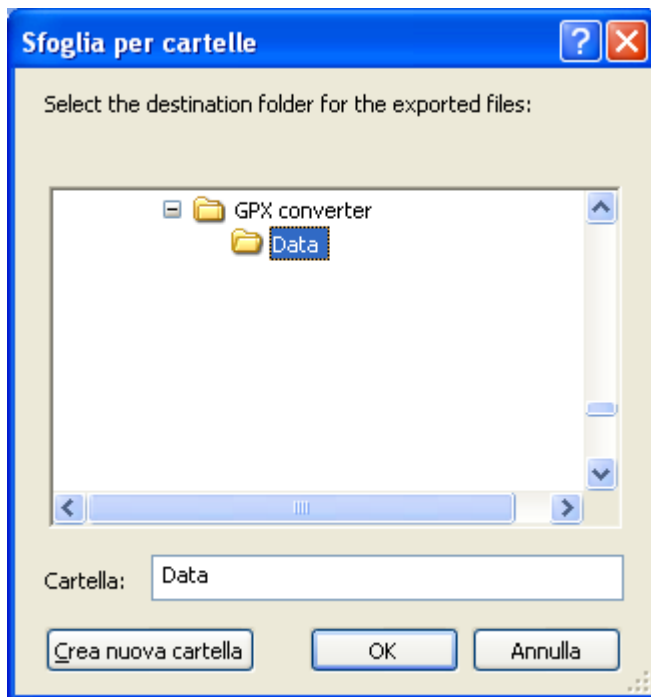
Run Converter.exe then press the "USERIMG to GPX" button on the program console.



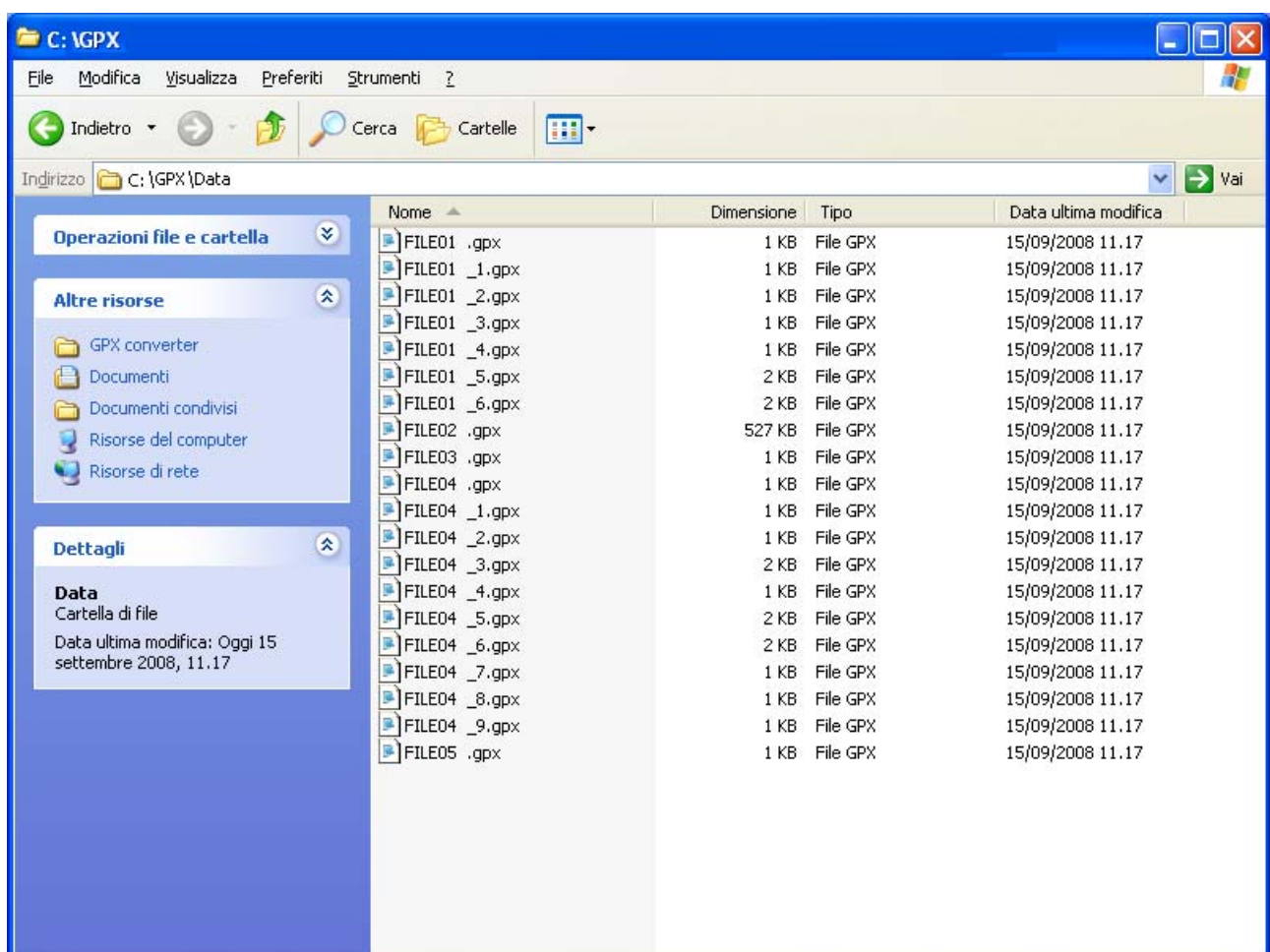
Select the USERIMG.BIN file to be converted



then select the destination folder in which the GPX files will be created.



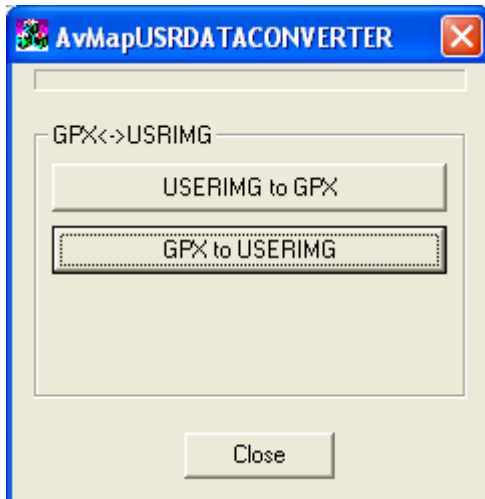
In that folder will be saved GPX format copies of the user data stored in the USERIMG.BIN file.



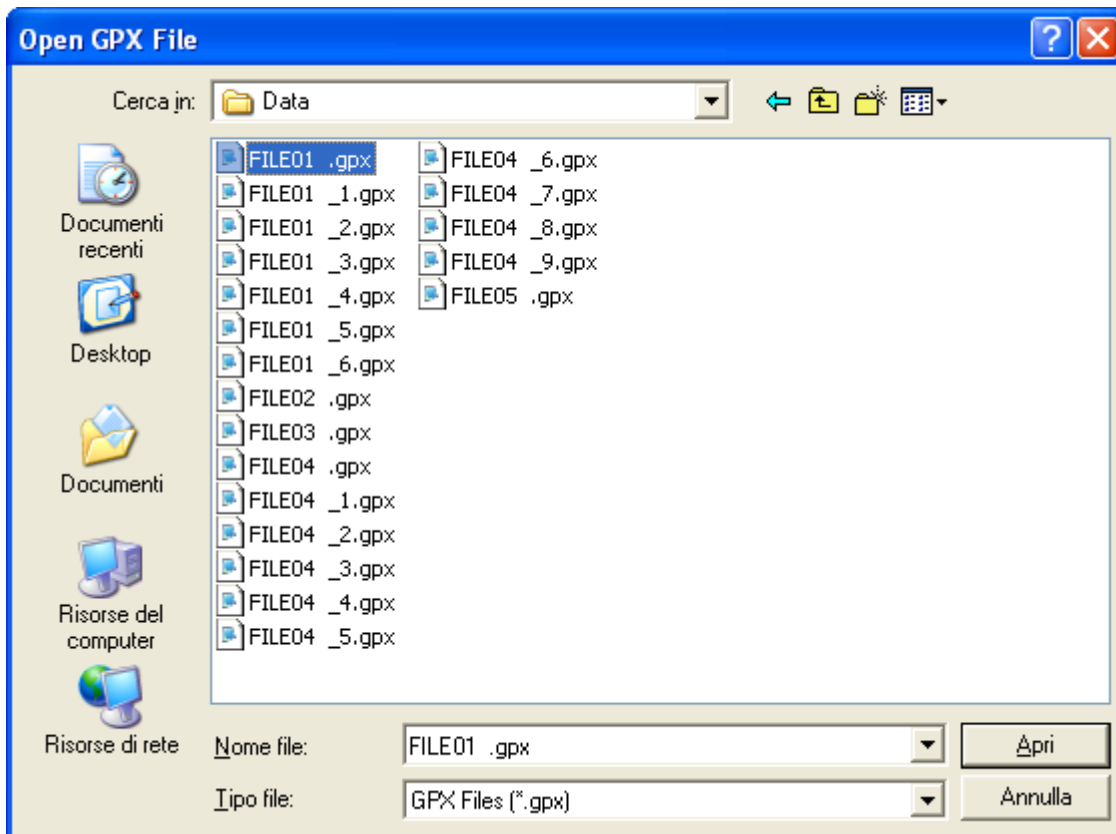
NOTE : each user data will be stored in a different GPX file. In case an object in the USRIMG.BIN file stores more than one route, several GPX files will be created, each with one route.

## 2) FROM GPX to USRIMG

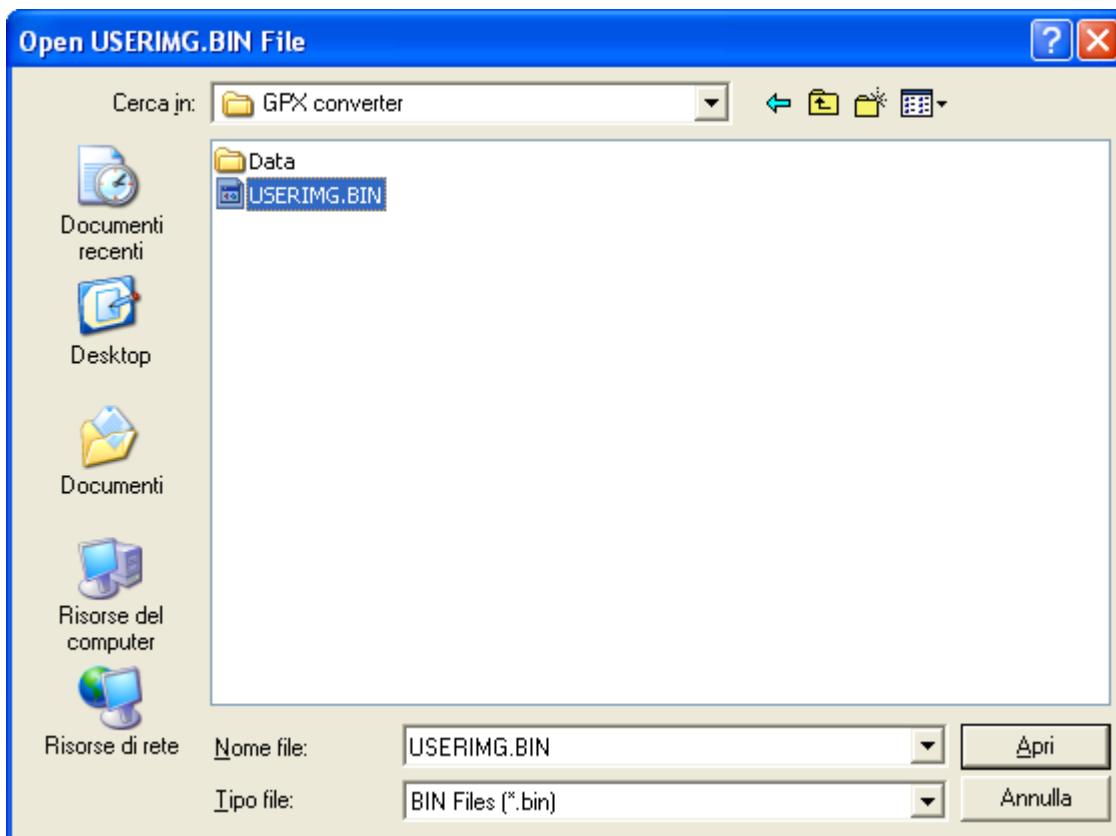
Press "GPX to USERIMG" on the program console,



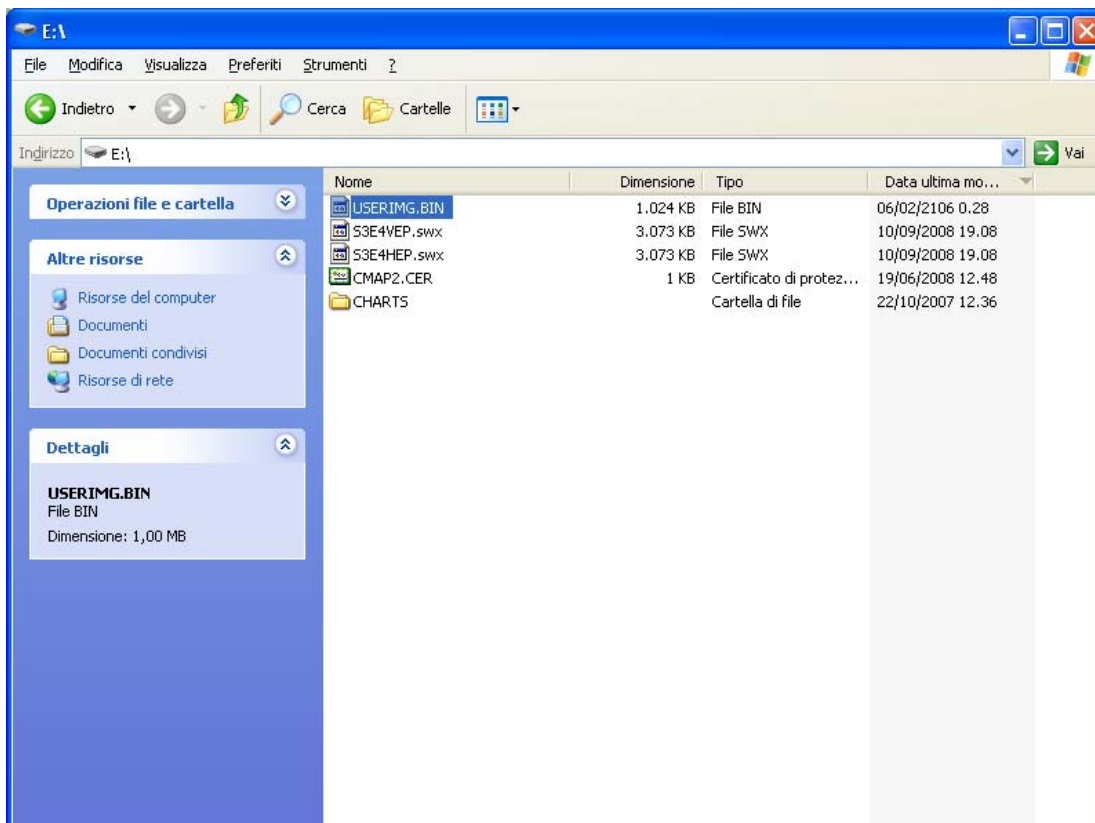
then select the GPX file to be converted



and the USERIMG.BIN file in which that GPX will be inserted.



Copy the USERIMG.BIN file in the main folder of the CF/SD



In order to see the new data on the navigator, load them using File Manager function.

An empty USRIMG file is included, but also not empty files can be used as well. New data will be added to them until the maximum capacity will be reached.

NOTE : due to memory restraints the space available in the USRIMG.BIN file for user data is limited. No more than 1000 Waypoints, 5000 Track points and 100 legs routes can be saved from a single file and no more than 60 files can be stored in an USRIMG.BIN